



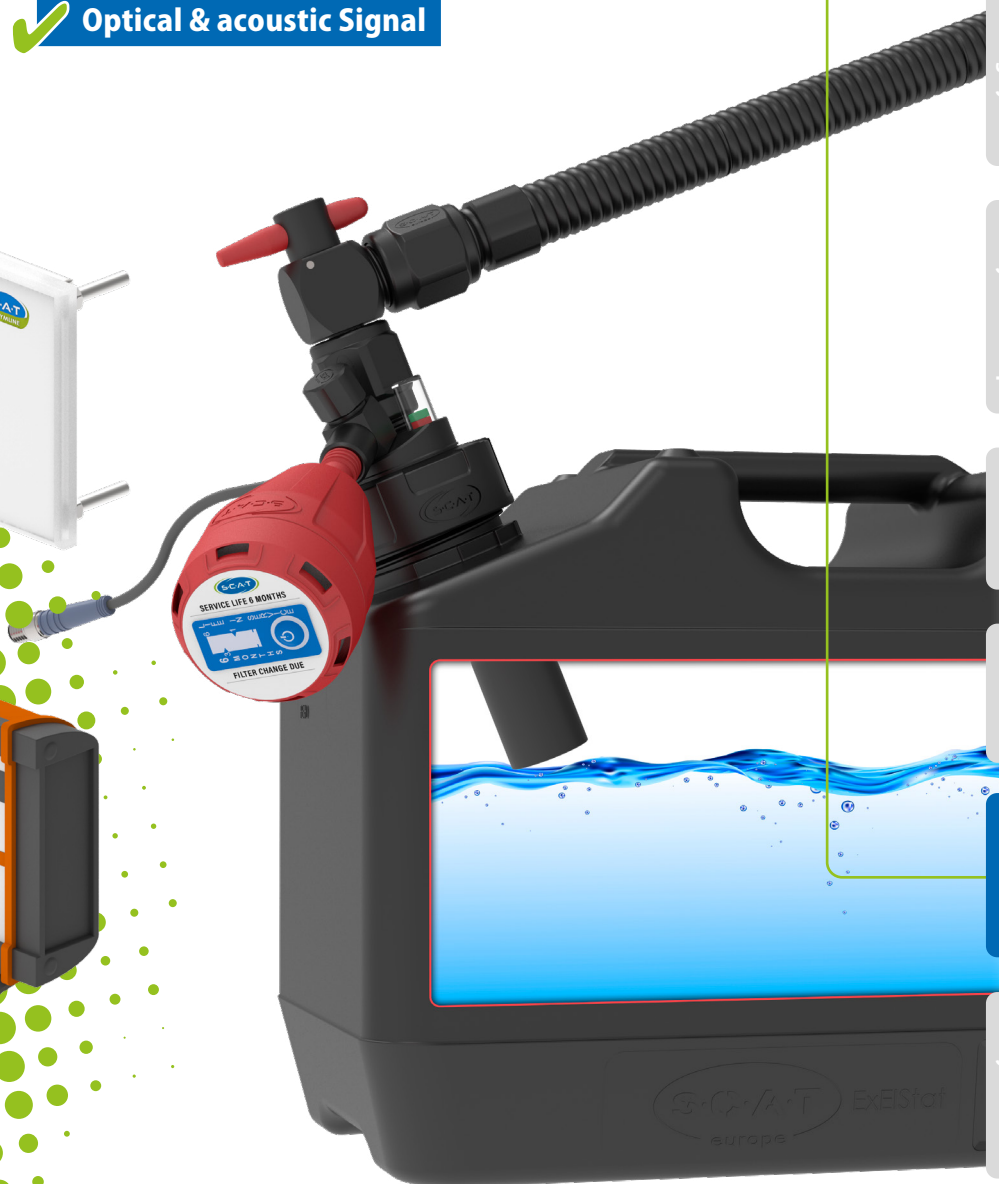
Keep your filling Levels under Control!

SCAT level controls warn of overflowing or empty containers with a visual and acoustic signal. In addition, peripheral devices such as pumps and valves can be controlled via contact switches.

Level Control

Always up-to-date.

- ✓ **Reliable Control**
- ✓ **Automatic Switching**
- ✓ **Optical & acoustic Signal**



Filling Units

Feedthroughs

Pipe System

Tubing System

Safety Waste Caps

Ventilation

Containers

Level Control

Safety Cabinets

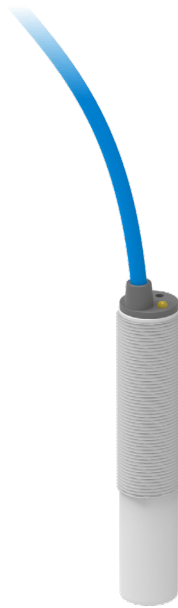
Level Control Sensors

A 108 277

Capacitive rod sensor, PTFE

- Housing material = PTFE
- Thread = M12x1
- Length sensor = 70 mm
- With LED display
- Cable length = 2 m
- For ATEX zone 0
- ATEX Ex II 1G Ex ia IIC T1-T6 Ga
- Output function = NAMUR
- Operating distance 1 - 6 mm adjustable
- Switch amplifier necessary (108 278)

Ex



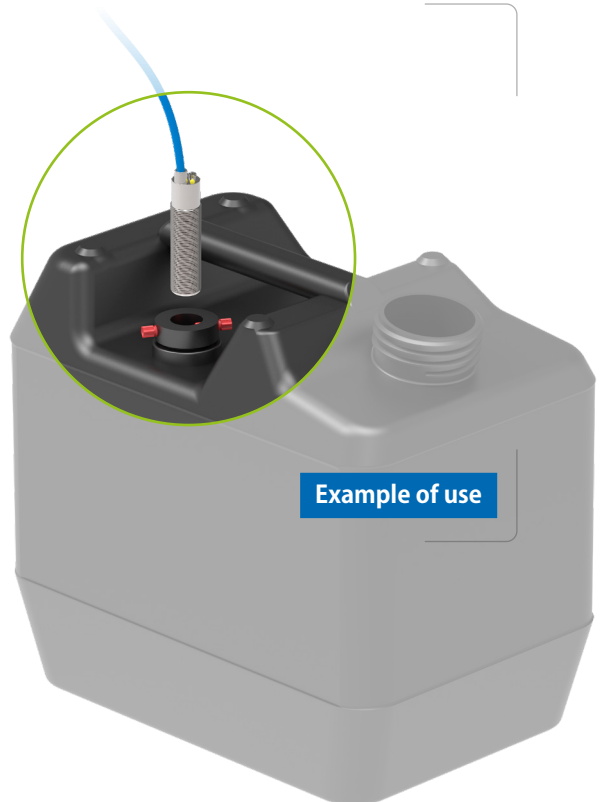
Example of use

B 108 178

Capacitive rod sensor, brass

- Housing material = brass
- Thread = M18x1
- Length sensor = 70 mm
- With LED display
- Cable length = 2 m
- For ATEX zone 0
- ATEX Ex II 1G Ex ia IIC T1-T6 Ga
- Output function = NAMUR
- Operating distance 1 - 8 mm adjustable
- Switch amplifier necessary (108 278)

Ex



Example of use

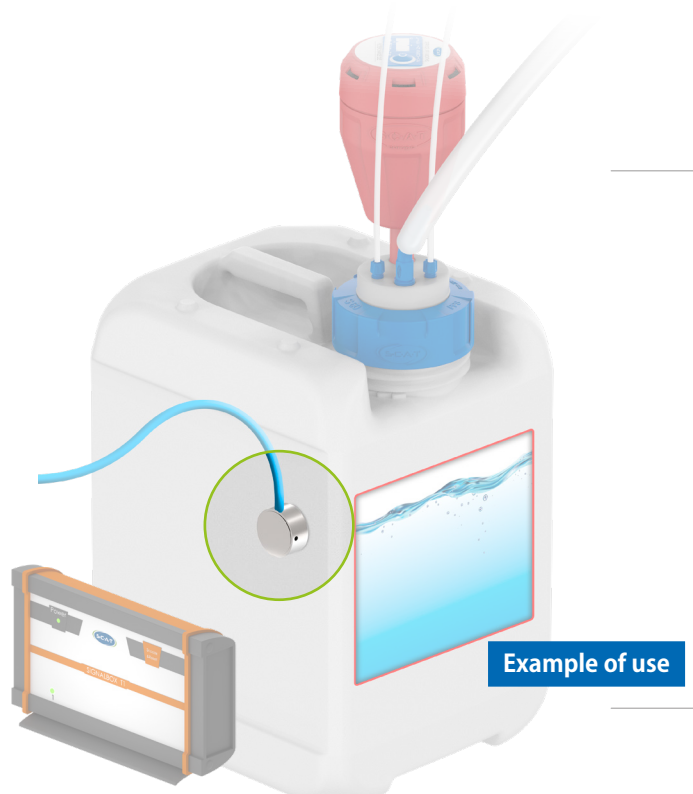
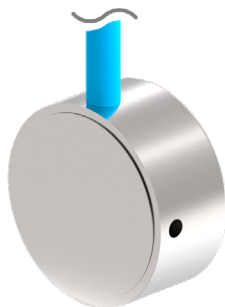
Fig.	Part No.	Description
A	108 277	Capacitive rod sensor, length cable 2 m , PTFE
	108 303	Capacitive rod sensor, length cable 5 m , PTFE
B	108 178	Capacitive rod sensor, length cable 2 m, brass

Level Control Sensors

A 108 291

Capacitive disc sensor, operating distance 1 - 10 mm

- Housing material = stainless steel
- Active surface = PTFE
- For ATEX zone 0
- Cable length = 2 m
- ATEX Ex II 1G Ex ia IIC T1-T6 Ga
- Output function = NAMUR
- Operating distance 1 - 10 mm adjustable
- Switch amplifier necessary (108 278)



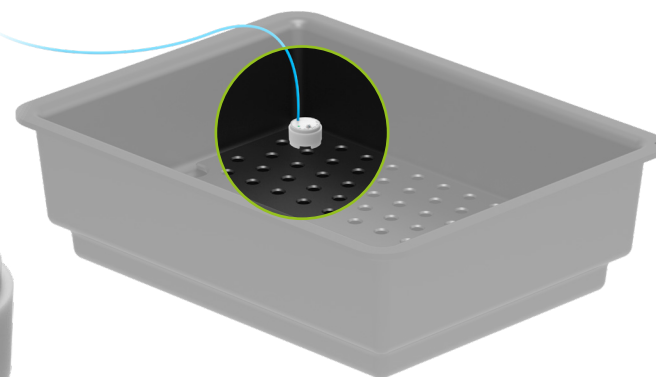
Example of use

Ex

B 108 301

Capacitive leakage sensor, operating distance 0.5 - 3 mm

- Capacitive sensor for leakage control
- Housing material = PTFE
- For ATEX zone 1
- ATEX Ex II 2G EEx ia IIC T1-T4
- Cable length = 2 m
- Output function = NAMUR
- Operating distance 0.5 - 3 mm adjustable
- Switch amplifier necessary (108 278)



Example of use

Ex

Ex

ATEX

According to the ATEX guidelines, Ex-sensors for use in potentially explosive atmospheres (Ex-zone) must be protected with switch amplifier. **See page 86.**

Fig.	Part No.	Description
A	108 291	Capacitive disc sensor, length cable 2 m
B	108 301	Capacitive leakage sensor, length cable 2 m
	106 737	Holder for leakage sensor for positioning below the positioning plate in the safety storage cabinet, PE-HD-EL

Filling Units

Feedthroughs

Pipe System

Tubing System

Safety Waste Caps

Ventilation

Containers

Level Control

Safety Cabinets

Level Control

Signaling Devices - Built-in Signalbox

A 106 741

Built-in Signalbox¹ (EU / UK / US)

- 1-channel
- For Safety Waste Cap and other electrical level controllers
- Touchless alarm-resetting fields for one container
- One switch input and one switch output for peripheral units
- Incl. 24V power supply



B 106 548

Built-in Signalbox² (EU / UK / US)

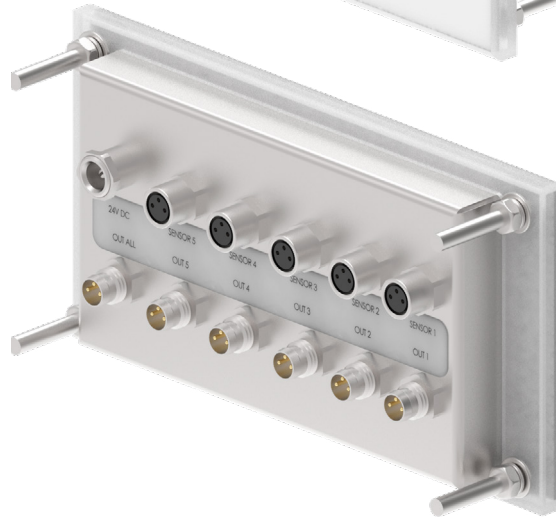
- 2-channels
- For Safety Waste Cap and other electrical level controllers
- Touchless alarm-resetting fields for two containers
- Two switch inputs and two switch outputs for peripheral units
- Incl. 24V power supply



C 106 735

Built-in Signalbox⁵ (EU / UK / US)

- 5-channels
- For Safety Waste Cap and other electrical level controllers
- Touchless alarm-resetting fields for five containers
- Five switch inputs and five switch outputs for peripheral units
- Incl. 24V power supply



Switch outputs for peripheral units (e.g. pumps, valves etc.)
Put the built-in signal box on your desktop with our table display 106 733 see on **page 86**.

Fig.	Part No.	Description
A	106 741	Built-in Signalbox ¹ , 1-channel, incl. power supply, (W x H x D): ca. 139 x 74 x 36 mm
B	106 548	Built-in Signalbox ² , 2-channel, incl. power supply, (W x H x D): ca. 139 x 74 x 36 mm
C	106 735	Built-in Signalbox ⁵ , 5-channel, incl. power supply, (W x H x D): ca. 139 x 74 x 36 mm

Level Control

Signaling Devices - Table Signalbox

A 108 087

Table signal box T1 (EU / UK / US)

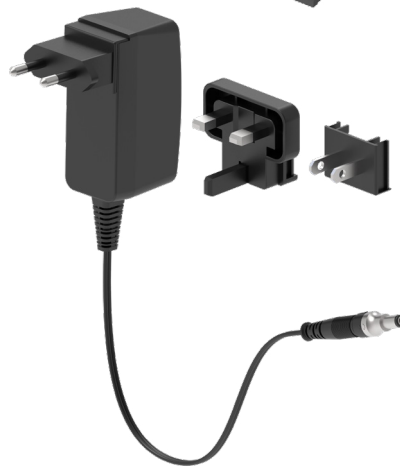
- 1-channel
- For Safety Waste Cap and other electrical level controllers
- Touchless alarm-resetting fields for one container
- One switch input and one switch output for peripheral units
- Incl. 24V power supply



B 108 088

Table signal box T5 (EU / UK / US)

- 5-channels
- For Safety Waste Cap and other electrical level controllers
- Touchless alarm-resetting fields for five containers
- Five switch inputs and five switch outputs for peripheral units
- Incl. 24V power supply



Cables

All SCAT Europe and SymLine signaling devices as signal boxes or signal lamps come with power supply and adapters for UK and US sockets. Signal cables you will find on **page 87**.

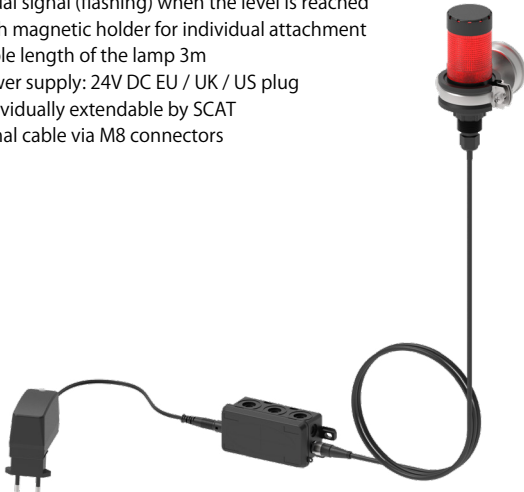
Fig.	Part No.	Description
A	108 087	Table signal box T1, incl. power supply, (W x H x D): ca. 180 x 105 x 55 mm
B	108 088	Table signal box T5, incl. power supply, (W x H x D): ca. 180 x 105 x 55 mm

Level Control Signaling Devices - Signal Lamp

A 108 334

Signal lamp for level control (visual)

- Visual signal (flashing) when the level is reached
- With magnetic holder for individual attachment
- Cable length of the lamp 3m
- Power supply: 24V DC EU / UK / US plug
- Individually extendable by SCAT signal cable via M8 connectors



**Directly connected to
a Canister or a SCAT
Safety Waste Cap**

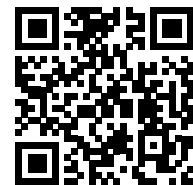
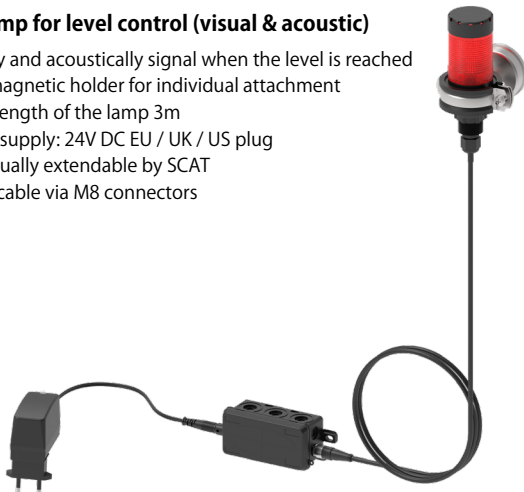
No signal box needed.



B 108 334-T

Signal lamp for level control (visual & acoustic)

- Visually and acoustically signal when the level is reached
- With magnetic holder for individual attachment
- Cable length of the lamp 3m
- Power supply: 24V DC EU / UK / US plug
- Individually extendable by SCAT signal cable via M8 connectors



Soundcheck!

SCAT Europe signal lamp for level control is available in two versions. Just scan the QR code and watch the video. Please turn on your speakers to check the sound.



EU / UK / US

Power supply and adapters included.

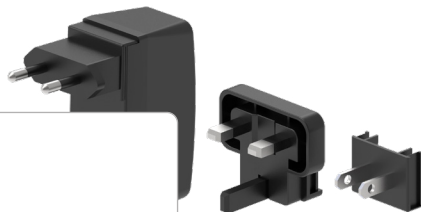


Fig.	Part No.	Description
A	108 334	Signal lamp for level control (visual), incl. power supply
B	108 334-T	Signal lamp for level control (visual & acoustic), incl. power supply

Level Control

Sets for automatic Switching

A 106 752

Set: automatic switching for containers (ATEX compliant)

- 1x Built-in Signalbox², EU / UK /US, 2-channel, two switch inputs and two switch outputs for peripheral units (106 548)
- 1x Switch amplifier set for safety cabinets „EU-plug“, consisting of: 1x Switch amplifier EU, 2 channels (106 678)
- 1x Switch Box: control unit for SCAT Built-in Signalbox or signal box T1 / T5 (106 730)
- 1x 3-way ball valve, 3x GL 25 (m), electric, material: galvanized steel (160 178)
- 1x 3-way ball valve mount, stainless steel (106 580)
- 2x signal cable for electronic level monitoring, length = 3 m (108 050)



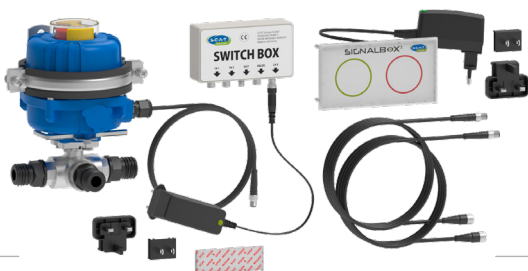
The Function

When a container reaches its maximum fill level, the automatic switching diverts the hazardous substances to another canister connected to the system. It warns you in good time before the fill level of your collection containers reaches a critical level.

B 106 751

Set: automatic switching for containers with signal box

- 1x Built-in Signalbox², EU / UK /US, 2-channel, two switch inputs and two switch outputs for peripheral units (106 548)
- 1x Switch Box: control unit for SCAT Built-in Signalbox or signal box T1 / T5 (106 730)
- 1x 3-way ball valve, 3x GL 25 (m), electric, material: stainless steel (160 178)
- 1x 3-way ball valve mount, galvanized steel (106 580)
- 2x signal cable for electronic level monitoring, length = 3 m (108 050)



C 106 750

Set: automatic switching for containers

- 1x Switch Box: control unit for SCAT Built-in Signalbox or signal box T1 / T5 (106 730)
- 1x 3-way ball valve, 3x GL 25 (m), electric, material: galvanized steel (160 178)
- 1x 3-way ball valve mount, stainless steel (106 580)
- 2x signal cable for electronic level monitoring, length = 3 m (108 050)

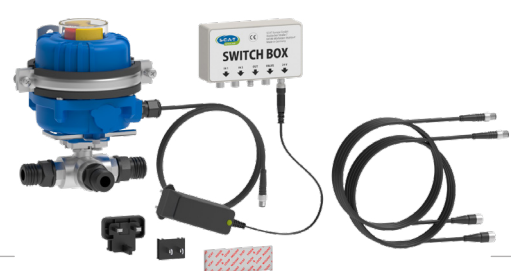


Fig.	Part No.	Description
A	106 752	Set: automatic switching for containers (ATEX)
B	106 751	Set: automatic switching for containers with signal box
C	106 750	Set: automatic switching for containers

Filling Units

Feedthroughs

Pipe System

Tubing System

Safety Waste Caps

Ventilation

Containers

Level Control

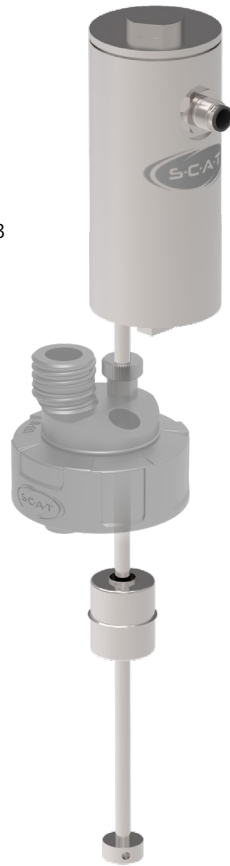
Safety Cabinets

Level Control Sets

A 502 042

Continuous level control

- Set for continuous level control with Signalbox UM-O-Ex with 230 VAC
- With display unit and stainless steel sensor probe
- Incl. cable with open ends
- Pre-alarm at 75%, max. level at 95% of the container 107 953
- Level sensor TORRIX Ex 6 B NT for Bypass without HART
- Probe head material: stainless steel 303/316L
- Protection class IP68
- Probe tube material = stainless steel canister 1.4571
- Probe length: 265 mm
- Probe tube diameter: 6 mm
- For canister 107 953 and Safety Waste Cap 106 507
- Accuracy: up to $\pm 0,01\%$
- Alarms can be freely set



Measure filling levels permanently

- Automatic warning for 5 different levels freely selectable
- Accuracy up to $\pm 0.5\text{mm}$
- The signal box offers 4 freely configurable outputs for controlling external devices
- The compact design and the independent mains supply enable easy handling and installation, even outside of control cabinets

Ex

B 106 507

Safety Waste Cap, S 60/61

- GL 25 (m)
- Fitting for continuous level control (502 042)
- PE-HD electrostatic conductive
- Connector for exhaust filter



PE-HD

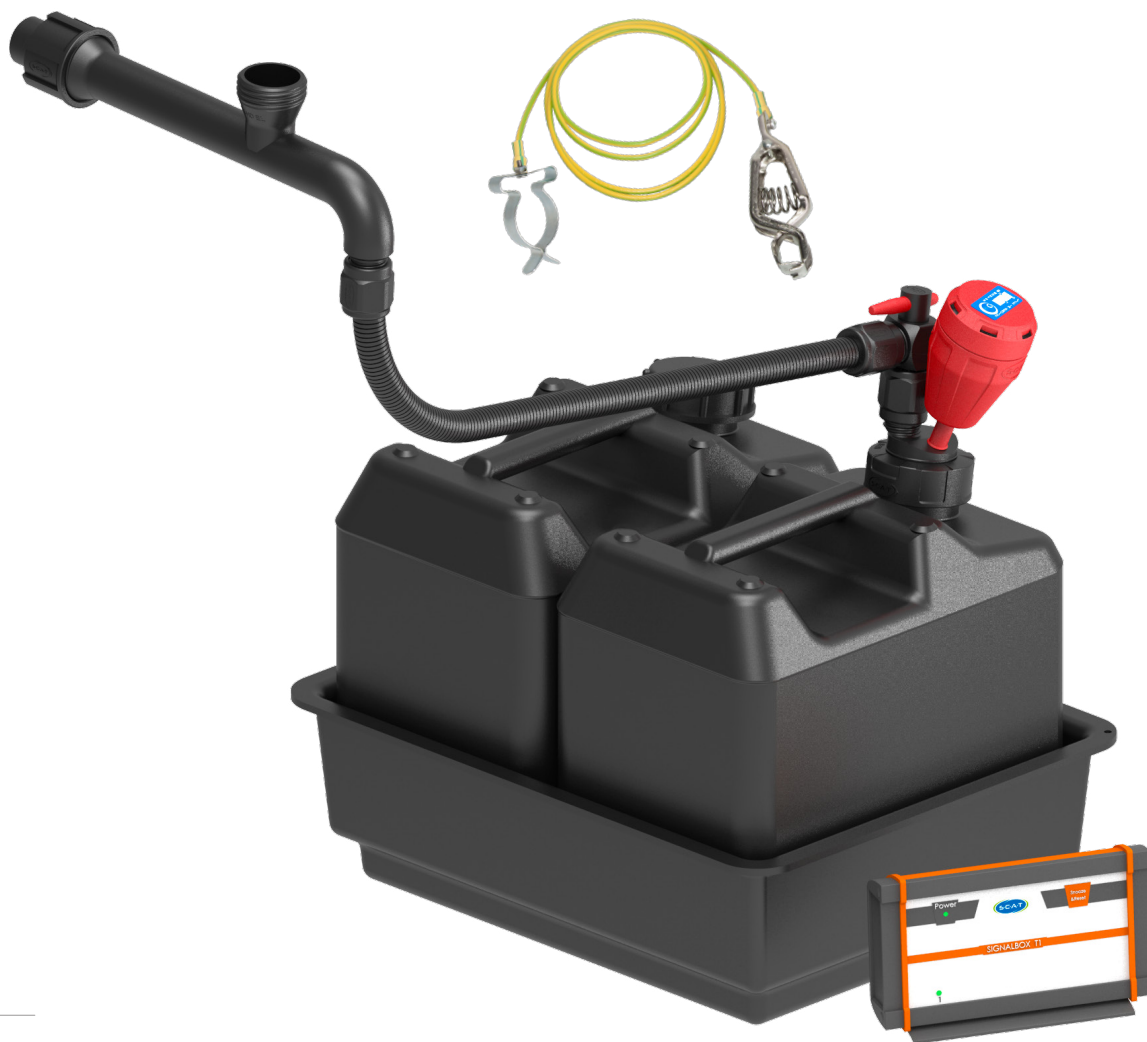
Fig.	Part No.	Description
A	502 042	Continuous level control
B	106 507	Safety Waste Cap, S 60/61

Level Control Sets

A 106 694

SymLine FLEX - Starter Set, Premium

- 1x 106 688 (Basic 32 pipe)
- 1x 106 423 (Blind plug for 32 pipe)
- 1x 106 568 (SymLine FlexTube, Length 1000 mm - flexible adaptable)
- 1x 106 475 (Shut-off, angled)
- 1x 490 336 (Exhaust filter M, V3.0, economy package)
- 1x 106 480 (Safety Waste Cap, S 60/61, electronic level control, GL 25(m), connector for exhaust filter, PE-HD electrostatic conductive)
- 2x 107 953 (Canister 10 L, S 60/61, PE-HD electrostatic conductive)
- 1x 117 985 (Collecting tray with base insert)
- 1x 108 176 (Grounding cable)
- 1 x 108 050 (Signal cable for electronic level control, length = 3 m)
- 1 x 108 087 (Signal Box T1 - EU)



Filling Units

Feedthroughs

Pipe System

Tubing System

Safety Waste Caps

Ventilation

Containers

Level Control

Safety Cabinets

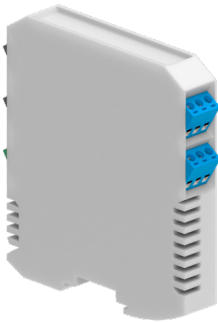
Fig.	Part No.	Description
A	106 694	SymLine FLEX - Starter Set, Premium

Level Control Accessories

A 108 278

Switch amplifier EU, 2 channels

- Switch amplifier EU
- 2 channels safety barrier
- 120 - 230 V AC supply
- Contact or NAMUR-inputs
- ATEX: Ex II (1) G [Ex ia] IIC
- Ex II (1) D [Ex ia] IIIC
- Including power cable 230V

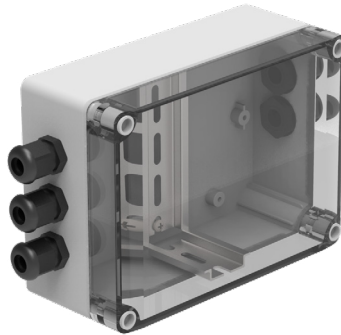


Ex

B 106 590

Housing for switch amplifier 108 278

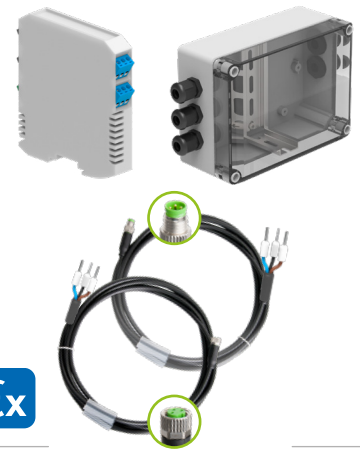
- Housing for the isolating switch amplifier 108 278
- L x W x H: 75 mm x 125 mm x 175 mm
- Material: polycarbonate light-grey (RAL 7035)
- Weight: 450g
- Protection class: IP 66



C 106 678

Switch amplifier set „EU plug“

- 1x Switch amplifier EU, 2 channels (108 278)
- 1x Housing for the isolating switch amplifier (106 590)
- 2x Cable set: Connection for switch amplifier to Safety Waste Cap with sensor

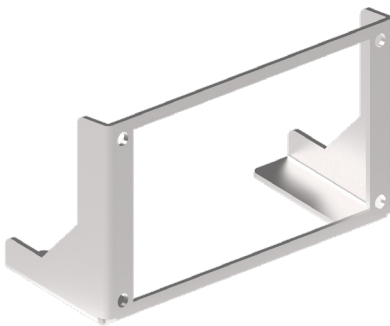


Ex

D 106 733

Table signal box display

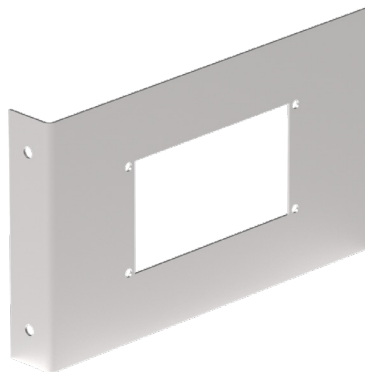
- Brushed stainless steel
- Wall thickness = 2 mm
- For signal boxes 1/2/5 with cable connection on the back (Version 2024)
- Stainless steel



E 106 658

Mount for built-in signal box

- Mount for signal box (for corner) (furniture installation)
- Wall thickness = 2 mm
- Stainless steel



F 106 703

Front panel for built-in signal box

- Front panel for built-in signal box
- Wall thickness = 2 mm
- Stainless steel

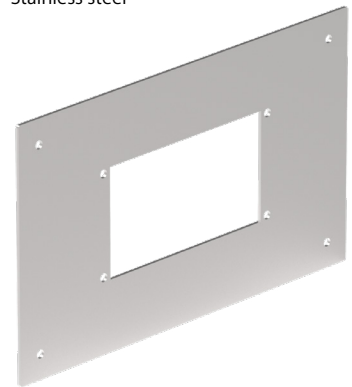


Fig.	Part No.	Description
A	108 278	Switch amplifier EU, 2 channels
B	106 590	Housing for switch amplifier 108278
C	106 678	Switch amplifier set „EU plug“
D	106 733	Table signal box display
E	106 658	Mount for built-in signal box
F	106 703	Front panel for built-in signal box

Level Control Accessories

A 108 304

Signal cable, length = 1.5 m

- Signal cable for electronic level control
- Length = 1.5 m



B 108 039

Cable for signalbox potential-free output, for peripheral instruments, 5 m

- Cable for relay contact, for switch off peripheral instruments
- Length = 5 m



C 108 314

Cable set Built-in signal box

- Connection for switch amplifier (108 278) / Built-in Signalbox consisted of:
- 1x 1.5 m cable connection for sensor with M8 (f) + 3x cable shoes
- 1x 3.5 m cable connection for signal box with M8 (m) + 3x cable shoes



Fig.	Part No.	Description
A	108 304	Signal cable, length = 1.5 m
	108 050	Signal cable, length = 3 m
	108 037	Signal cable, length = 5 m
	108 038	Signal cable, length = 10 m
B	108 039	Cable for signalbox potential-free output, for peripheric instruments, length = 5 m
C	108 314	Cable set Built-in signal box 1.5 m (m) 3.5 m (f)
	108 219	Cable set Built-in signal box 3.5 m (m) 1.5 m (f)